

CLIMATE CHANGE

SDG 13 seeks to implement the commitment to the United Nations Framework Convention on Climate Change and further operationalising the Green Climate Fund. It aims to strengthen countries' resilience and adaptive capacity to climate-related hazards and natural disasters by integrating climate change mitigation and adaptation measures into national strategies, policies and planning.

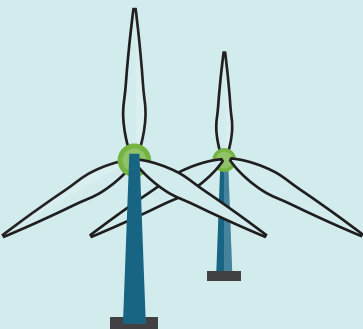
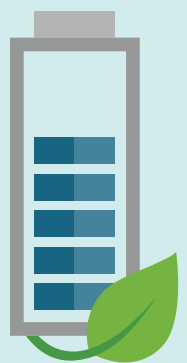


-Greenhouse gas emissions(1)
78.3 Index,
1990 = 100
- 3.7 index points since 2012



-GHG emissions intensity of energy consumption (1)
86.6 Index,
2000 = 100
- 5.2 index points since 2012

This also requires improved education, awareness-raising and capacity on climate change mitigation and adaptation. As the poorest and most vulnerable people are affected the most by climate change impacts, SDG 13 calls specifically for raising capacity for climate change-related planning and management in least developed countries. The EU focuses on monitoring progress in climate mitigation efforts, in reducing climate impacts and in supporting climate action.



-Share of renewable energy
17.5% of gross final energy consumption
+ 2.8 pp since 2012



-CO2 emissions from new passenger cars
118.5 g of CO₂ per km
- 10.4 % since 2012 (2)